

CERTIFIED LAND CORNER RECORDATION

DESCRIPTION OF CORNER EVIDENCE FOUND, AND ORIGINAL RECORD (If known)

T. 14 N.
30 | 29 1/4
R. 65 W.

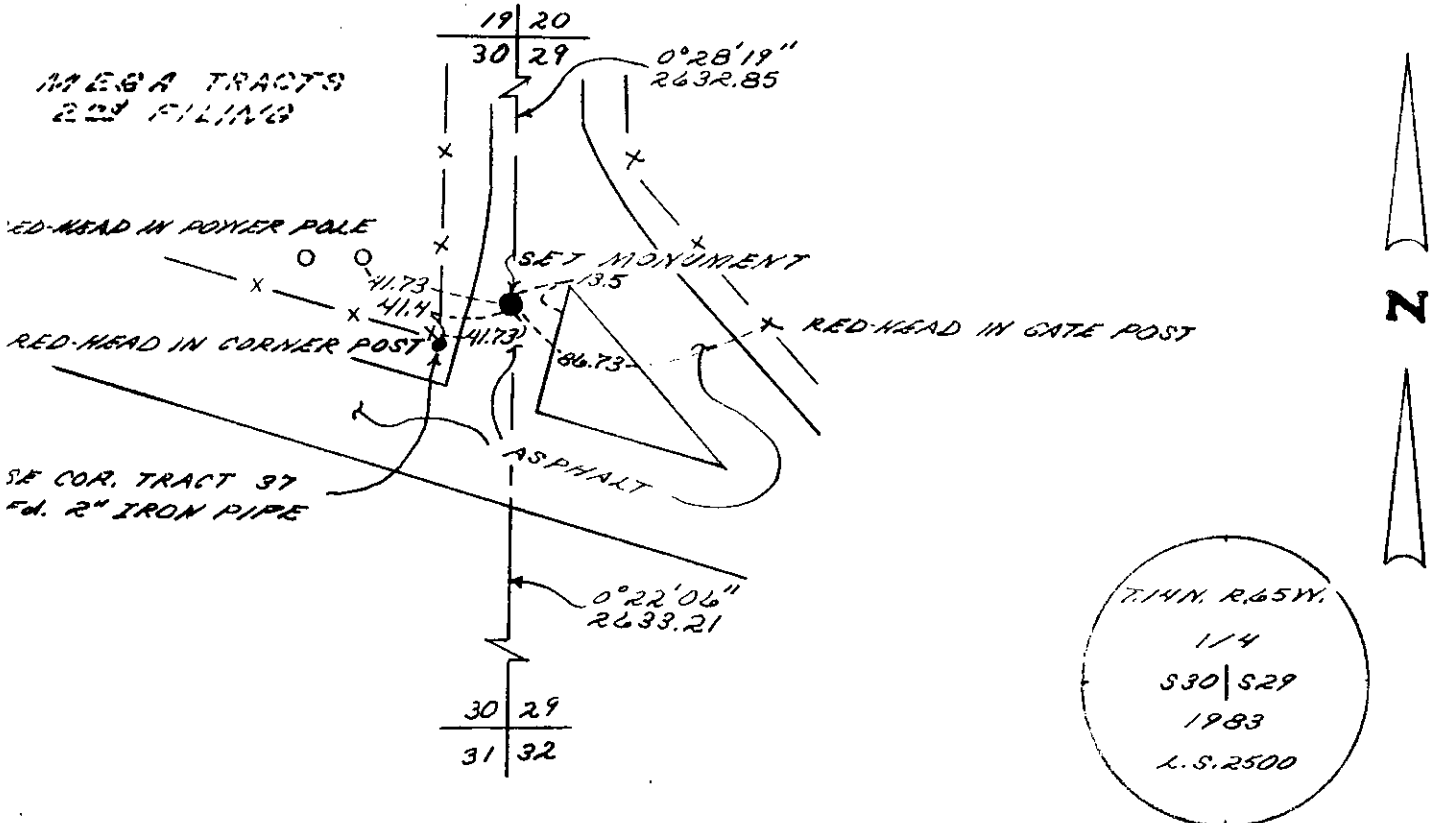
FOUND: NO EVIDENCE OF PREVIOUS MONUMENTATION
SET: 1 1/2" x 18" LONG REBAR W/ 2" ALUMINUM CAP, 0.1'
BELOW SURFACE, STAMPED AS SHOWN BELOW FROM
MONUMENTATION FOUND IN MESA TRACTS 229 FILING

**DESCRIPTION OF MONUMENT AND ACCESSORIES ESTABLISHED
TO PERPETUATE THE ORIGINAL LOCATION OF THIS CORNER:**

SEE TIES BELOW

SKETCH, WITH COURSE AND DISTANCE TO ADJACENT CORNER IF DETERMINED IN THIS SURVEY.

(May Sketch or Paste Reproduction on Reverse Side.)



T. 14 N. R. 65 W.
1/4
30 | 29
1983
L.S. 2500

I, JOHN A. STEIN certify that I have carefully performed or reviewed the work done on the diagrammed corner as reported on this recordation form and approve the same.

John A. Stein L.S. 2500
Signature of Surveyor Registration No.

STATE OF WYOMING,
Office of Clerk and Recorder,
County of Taramie

740810

This "corner record" was filed for record on the 1 day of APR 18 1984, 1984, was noted on the cross-index plat and is assigned page No. , in book No. .

County Official			
Cross Index No. <u>7-5</u>	T. <u>14 N.</u>	R. <u>65 W.</u>	Mer. <u>6th</u>
_____	T. _____	R. _____	Mer. _____
_____	T. _____	R. _____	Mer. _____
_____	T. _____	R. _____	Mer. _____
_____	T. _____	R. _____	Mer. _____
_____	T. _____	R. _____	Mer. _____
_____	T. _____	R. _____	Mer. _____

T-5 14/65

3

3